

Weather Message Net Quick Start Guide

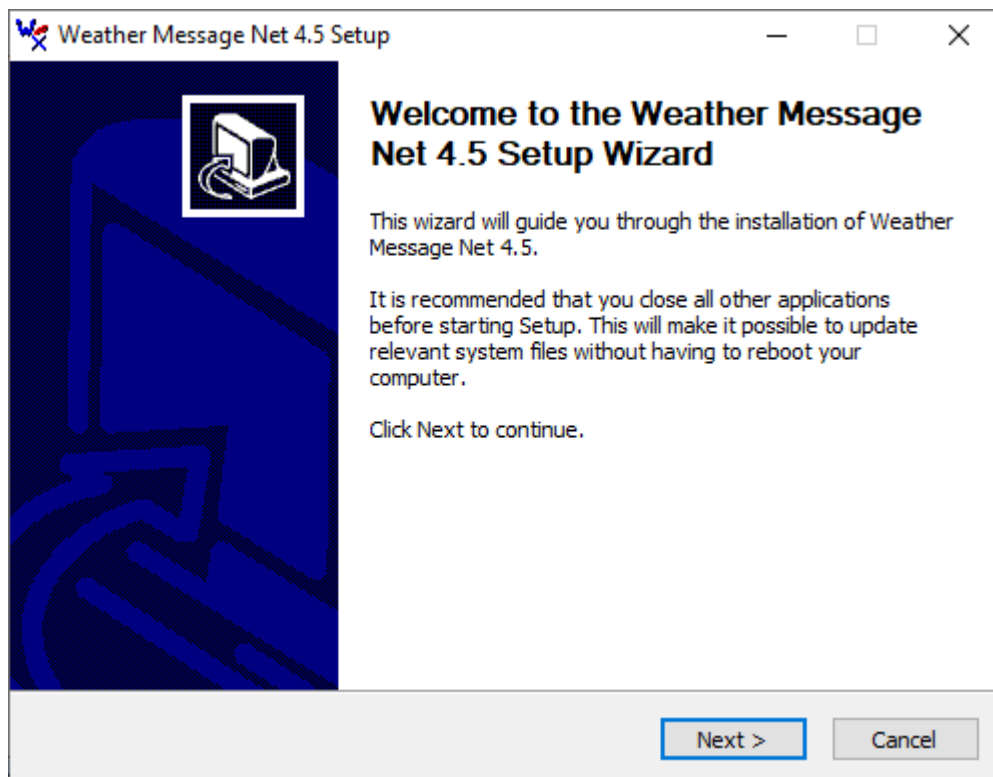
Version 4

The following guide will take you through the process to install and set up Weather Message. It is broken down into two sections, Software Installation and Alarm Setup.

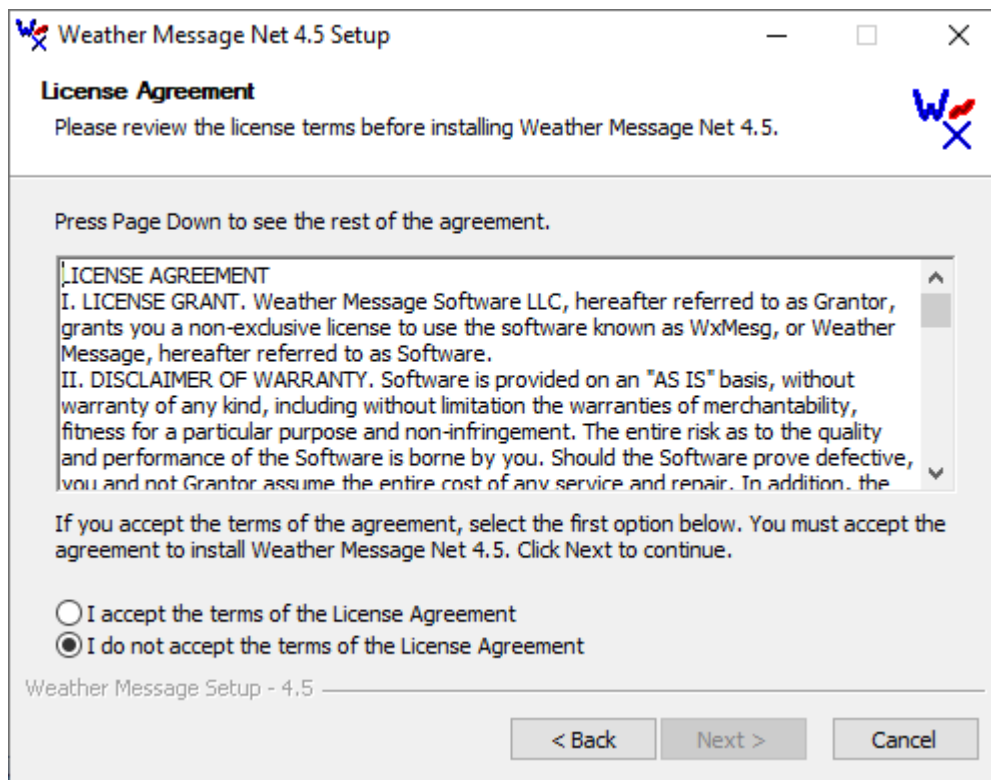
This guide provides only the basic setup. Each software application contains windows based help. Pressing the F1 key or clicking the Help, Weather Message Help option will display detailed information about the respective application.

Software Installation

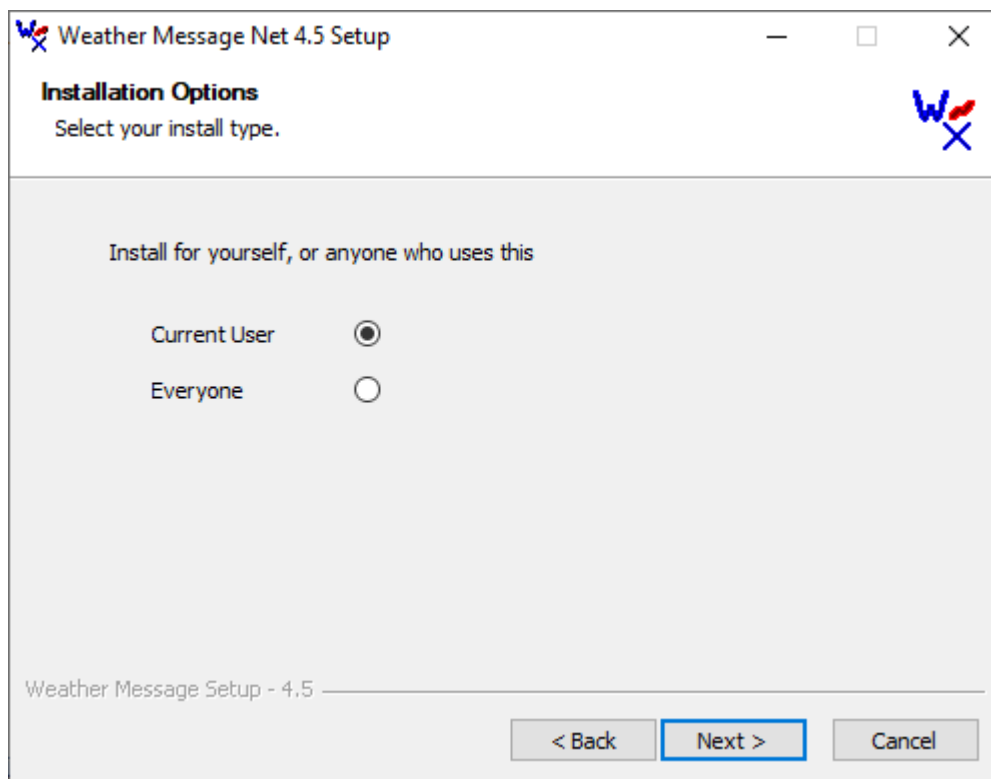
1. Begin by installing the Weather Message software.
 - a. If you received a CD, insert it in your CD drive, you will then be presented with a menu. Select Weather Message to begin the installation.
 - b. If you are downloading the software from the website, download the full installation and select open when the file is downloaded.
2. When the installation program starts, you will be presented with the following screen.



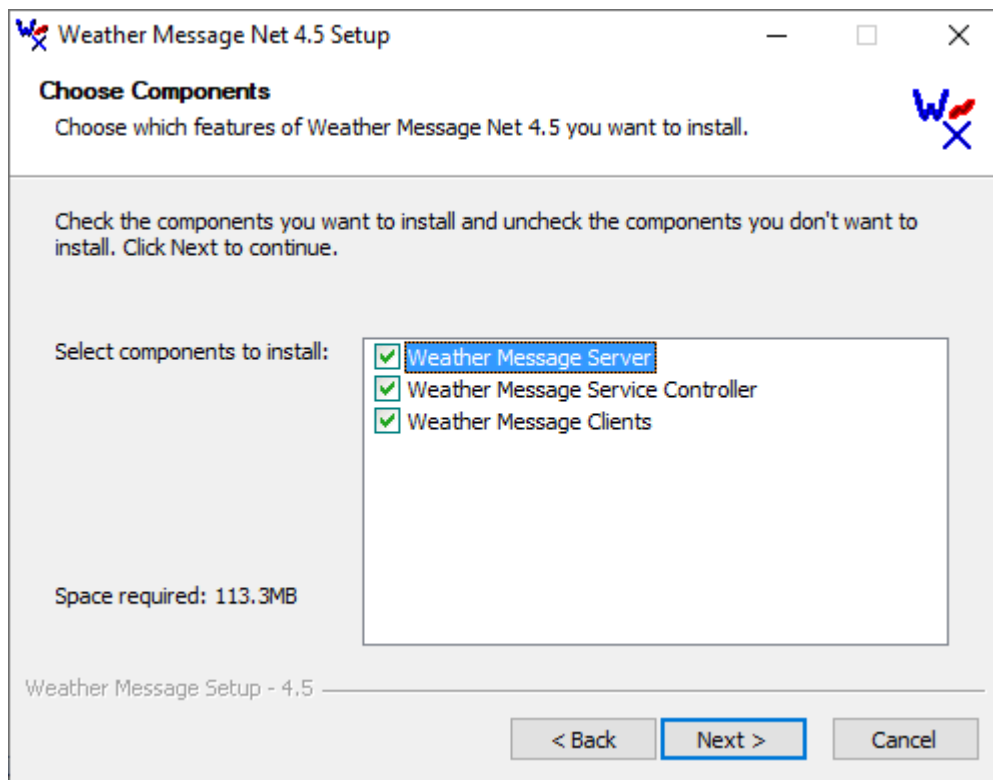
3. Click the **Next** button to start the installation.



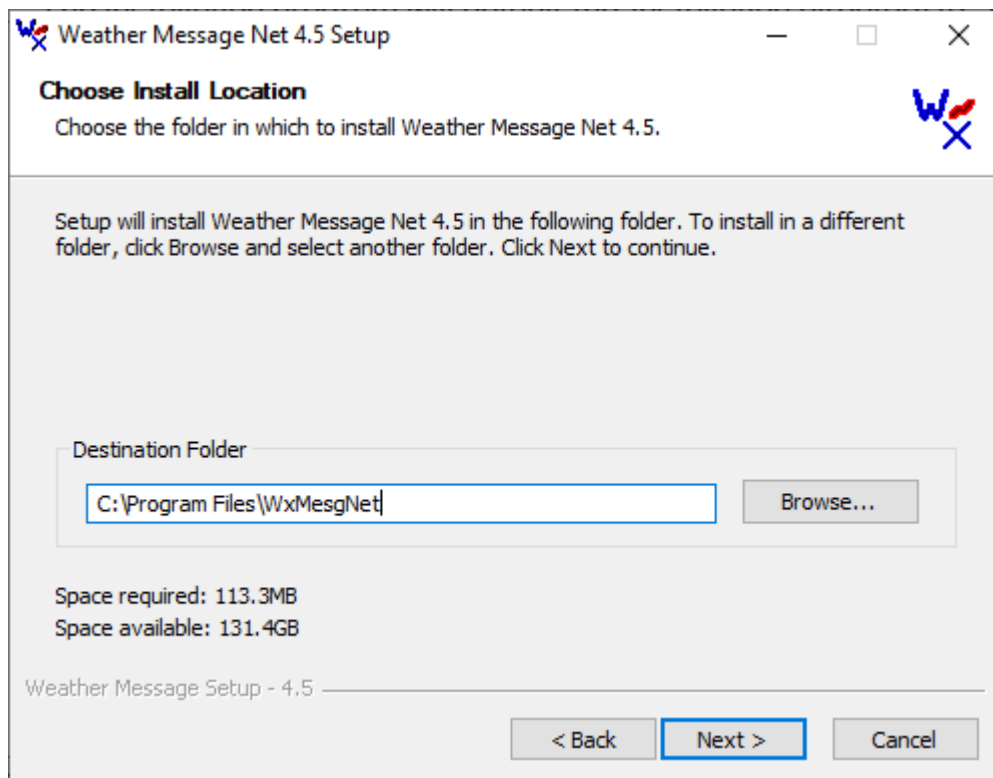
4. Read the license agreement and click on the **I accept the terms in the License Agreement** button. Then click the **Next** button.



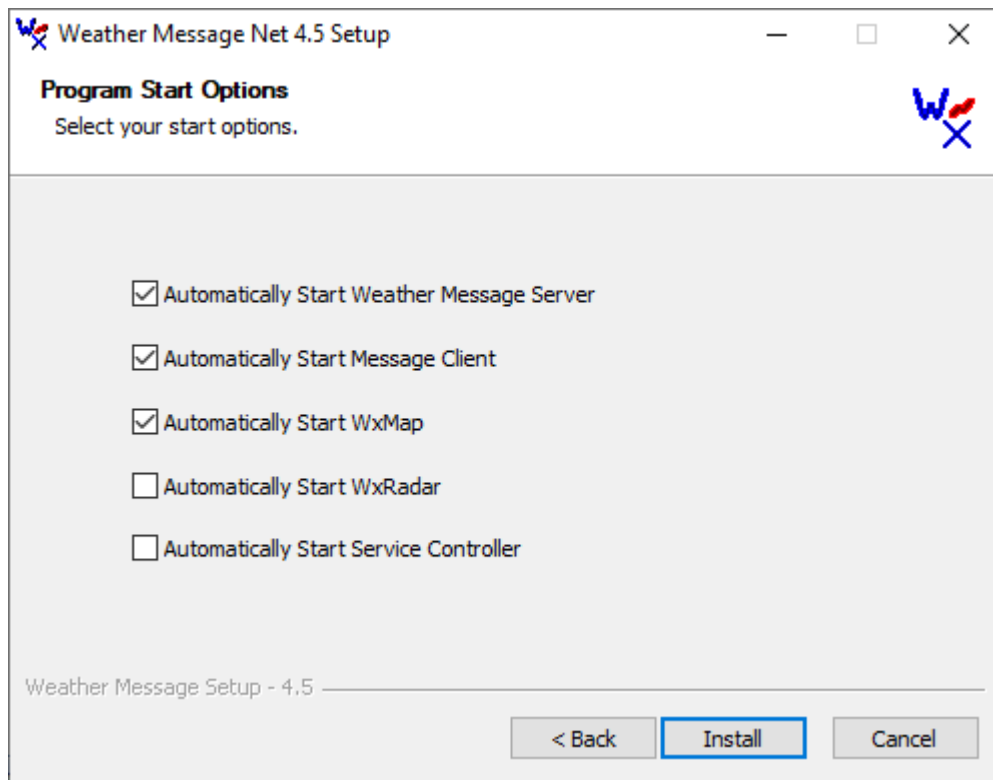
5. If you want Weather Message to be available to everyone that logs into this computer, select **All Users**. Click **Next**. *Note: You must be logged in as an Administrator to use this option.*



6. Select the components that you want to install, by clicking in the box to the left of the program. We recommend that you select all of the programs. After selecting the components, click **Next**.



7. The installation program will default the installation directory to “C:\Program Files\WxMesgNet”. Unless you have a reason to change this directory, accept the default setting by clicking **Next**.

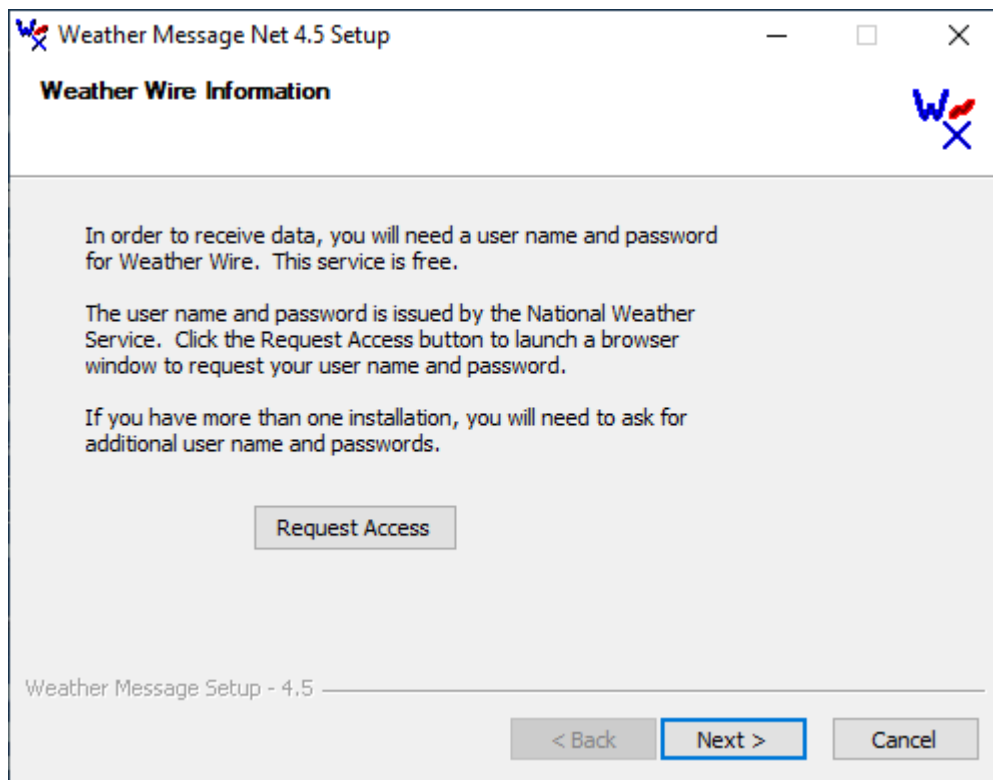


8. If you want Weather Message to automatically start when you log into the computer, select the components to automatically start. After making these selections, Click **Install**. You will see an installation screen showing the progress of the installation.

Note: You may be prompted to reboot your computer after the installation program updates your system files.

Note: Weather Message Net requires the Microsoft .Net 4.8 runtime files. If you do not have them installed on your computer, the install program will alert you to this fact and automatically download and install them from the Microsoft.com.

9. Weather Message uses the National Weather Service’s Weather Wire service to receive data. This service requires a user name and password. When the software installation is complete, you will be shown this screen.



Click the Request Access button to open a browser window to the National Weather Service's Weather Wire website.

NWWS OI Request

[Weather.gov](#) > [NOAA Weather Wire Service](#) > NWWS OI Request

[Home](#) [News](#) [Product Information](#) [Configuration](#) [FAQ](#) [Dissemination](#) [Contacts](#)

NWWS OI Request

For NWWS-Open Interface message detail (other than just header information), XMPP reader sof

To request a user_id and password for NWWS Open Interface access,

First Name:	<input type="text"/>
Last Name:	<input type="text"/>
Company:	<input type="text"/>
Address:	<input type="text"/>
City:	<input type="text"/>
State:	<input type="text"/>
Zip:	<input type="text"/>
Telephone:	<input type="text"/>
Contact e-mail:	<input type="text"/>

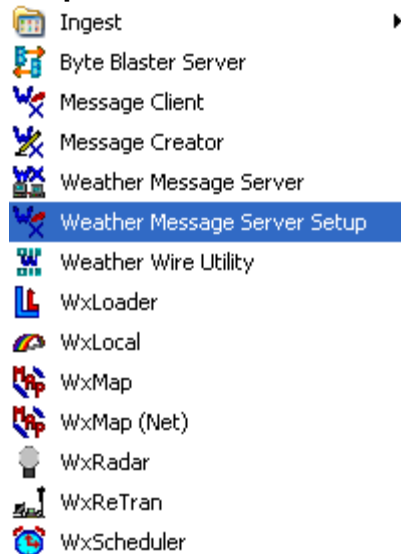
Fill out the information on this screen to request a user name and password. It may take one to five days for them to process your request. If you have questions about the request, send them to NWWS.Help@noaa.gov.

Note: While you are waiting on your user name and password, you can configure Weather Message to FTP ingest the files. See the graphic image ingest setup later in this document.

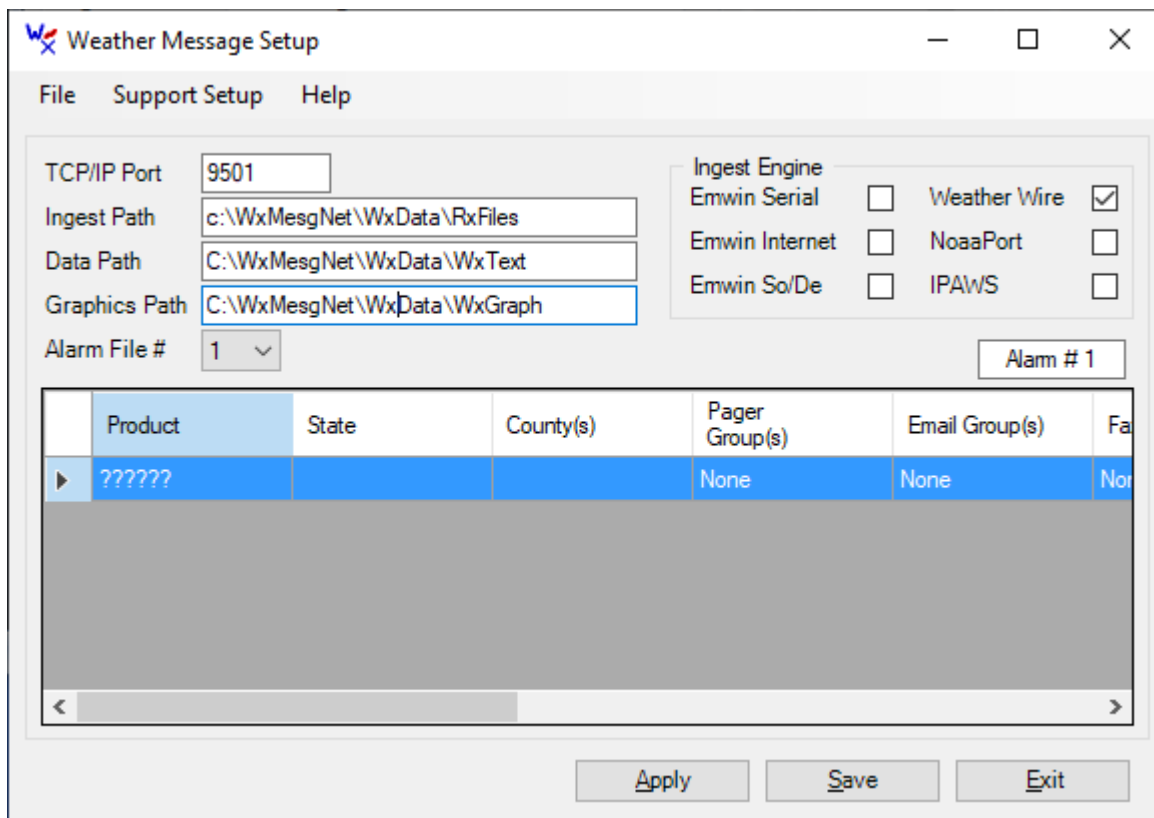
When the installation is complete, the installation program will prompt you to click the **Finish** button. After clicking the finish button, the installation program will close. You have now successfully installed Weather Message on your computer.

Software Setup

1. After the software has been installed, you will need to setup a few options before you are ready to receive weather messages. Click **Start, Programs, Weather Message, Weather Message Server Setup**.



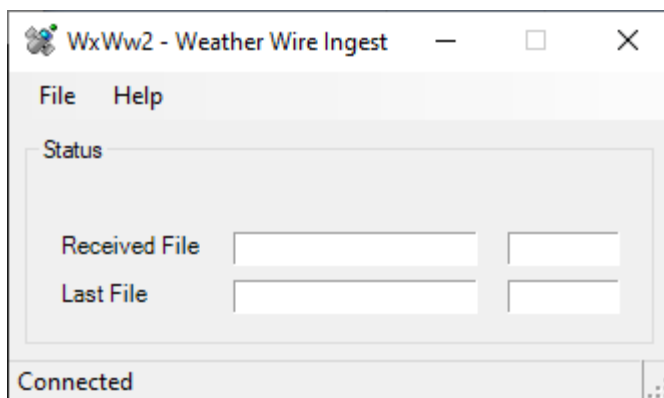
2. Weather Message Server Setup will start. You will see this screen.



3. You will need to select the Ingest Engine that you will use to receive the EMWIN data. The program defaults to Weather Wire Internet. If you will be receiving data using another method, select the appropriate ingest engine.

Click **Save** to save your settings. The program will ask you if it is ok to create the directories. Answer **Yes**. The setup program will now terminate.

4. If you will be using Weather Wire Ingest follow these steps, otherwise skip to step 5:
 - a. Click **Start, Programs, Weather Message, Ingest, and Weather Wire**. You will see this screen.



The program will not be receiving data until you enter your National Weather Service assigned User Name and Password.

- b. Click **File** then **Setup**.

The image shows the 'WxWw2 Setup' dialog box with the 'Common' tab selected. The 'Settings' tab is also visible. The configuration fields are as follows:

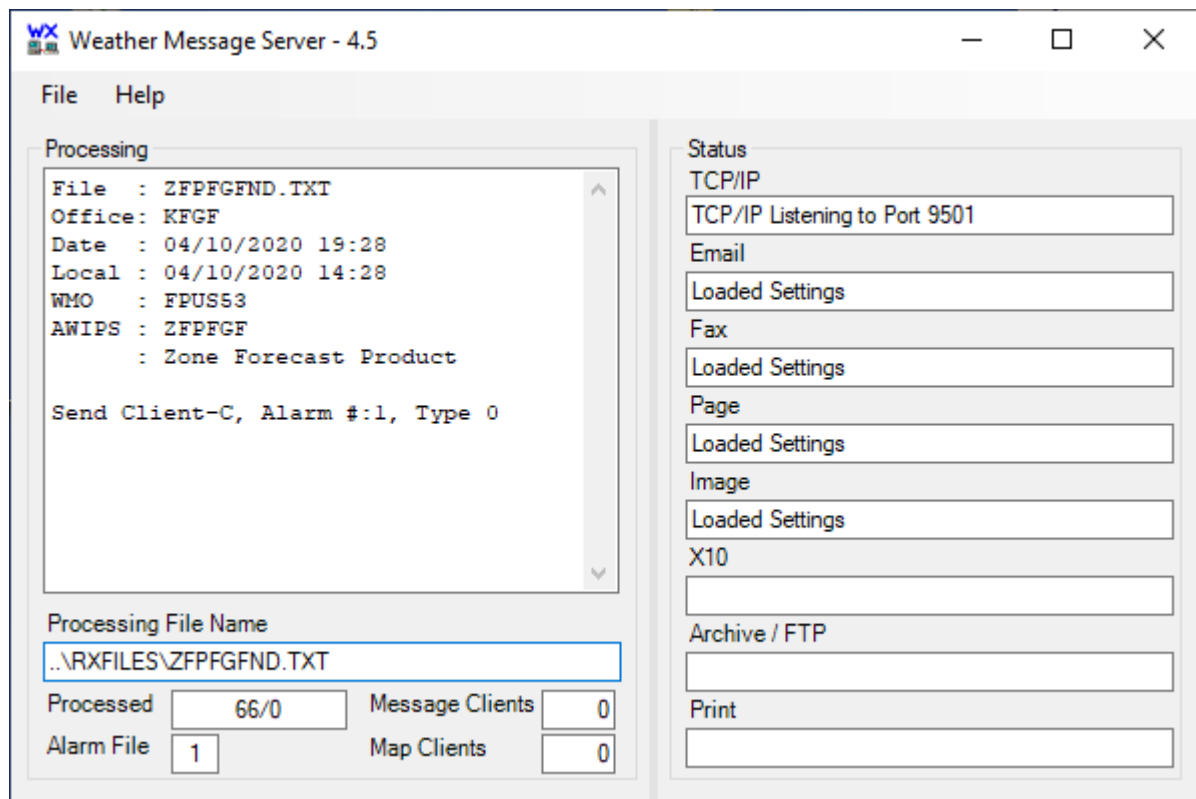
Field	Value
Weather Wire URL	nwws-oi.weather.gov
Weather Wire Port	5223
User Name	
Password	
Authenticate	Any
Name by AWIPS	<input checked="" type="checkbox"/>
Global Ingest Paths	<input checked="" type="checkbox"/>
No data alert after	1 Minutes

Buttons: Save, Cancel

- c. On the setup screen, enter your User Name and Password.
 - d. **Save** these settings. If the program asks to create directories, go ahead and answer **Yes** to those prompts.
 - e. Exit this program.
5. You are now ready to start Weather Message Server. On you desktop, click the *Weather Message Server* icon.



This will start the Weather Message Server. The Server will automatically start the ingest engine you selected earlier. You will see them both running in your system tray.

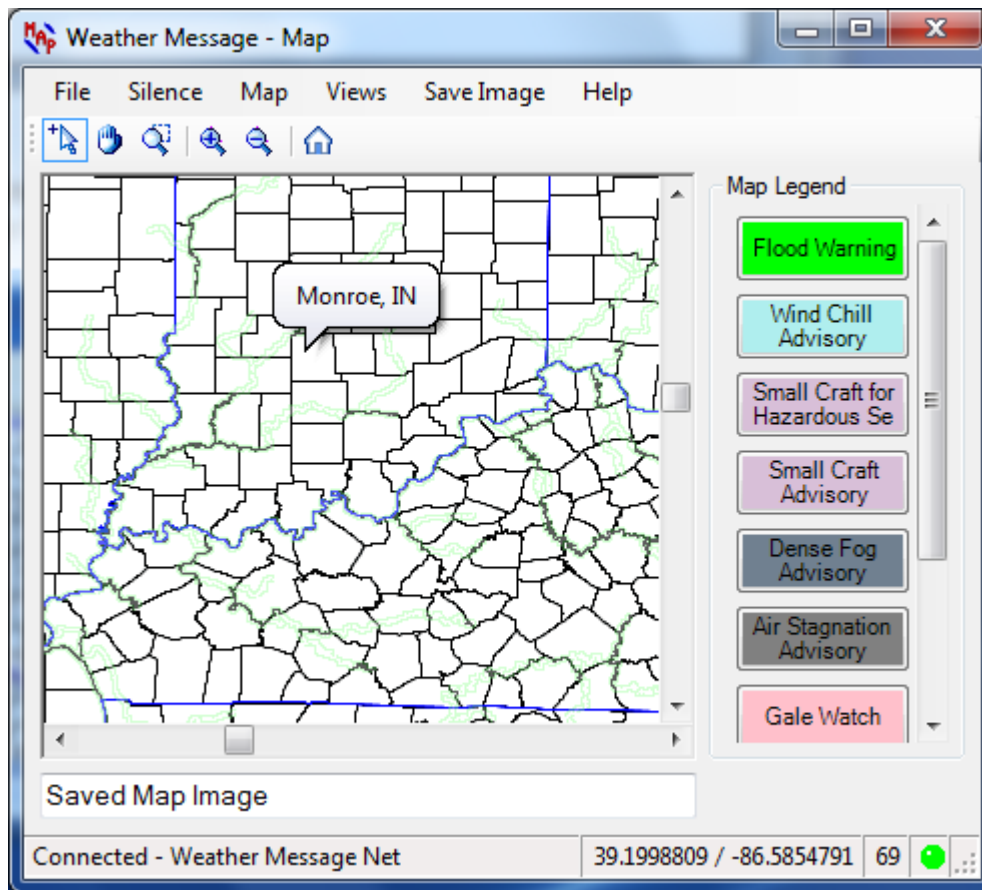


6. Start the Weather Message Client by clicking on the *Weather Message Client* icon on your desktop.
7. Start the Weather Message Map by clicking on the *Weather Message Map* icon on your desktop.
8. You should now start seeing text messages arrive in the Message Client window.
9. The software is now in the default configuration. This configuration will receive and process all of the messages received. You will want to reconfigure the alarms for your area. To do this Click **Start, Programs, Weather Message, Weather Message Server Setup**. See the Alarm Setup section of this document for quick overview of alarm setup.
10. For additional information, click Help and Weather Message Help to view the documentation.

Alarm Setup

Before you can begin to setup alarms for your local area, you need to know the Weather Forecast Office (WFO) in charge of your area. Weather Message uses the three-character WFO abbreviation to alarm messages. For example the WFO for Tallapoosa County, Alabama is Birmingham. The Birmingham WFO's abbreviation is BMX.

The easiest way to get your WFO abbreviation is to use WxMap. Start WxMap and locate your county. You may have to Zoom In / Out so you can see your county. Use the F11 key to zoom in and the F12 key to zoom out. After locating your county, right click on the county and select "County Information". Here is an example for Monroe, Indiana.



The abbreviation for the WFO covering Monroe, Indiana is **IND**. This information will be used when you setup your alarms.

Alarms are used in Weather Message to tell the program which weather products or messages that you want to process. They are generally broken down into four categories; 1) Alarms for the Map, 2) Alarms for the Message Client, 3) Alarms for Paging, Emailing and Faxing and 4) Alarms for graphic products. The following discussion will focus on each of these categories. It is important to note that one alarm could address all four categories.

The weather products or messages created by the National Weather Service have a four to six-character product identifier. This identifier is generally referred to as the AWIPS identifier. AWIPS is the software that the NWS uses to create weather products or messages. The following is an example of a typical tornado warning weather product.

```

WFUS54 KBMX 301326
TORBMX
ALC113-301400-
/O.NEW.KBMX.TO.W.0054.050430T1326Z-050430T1400Z/

BULLETIN - EAS ACTIVATION REQUESTED
TORNADO WARNING
NATIONAL WEATHER SERVICE BIRMINGHAM AL
826 AM CDT SAT APR 30 2005

THE NATIONAL WEATHER SERVICE IN BIRMINGHAM HAS ISSUED A

* TORNADO WARNING FOR...
SOUTHERN RUSSELL COUNTY IN SOUTHEAST ALABAMA

* UNTIL 900 AM CDT

* AT 823 AM CDT...NATIONAL WEATHER SERVICE DOPPLER RADAR INDICATED A
SEVERE THUNDERSTORM CAPABLE OF PRODUCING A TORNADO 8 MILES
SOUTHWEST OF GLENVILLE...OR ABOUT 11 MILES NORTHWEST OF EUFAULA...
MOVING NORTHEAST AT 55 MPH.

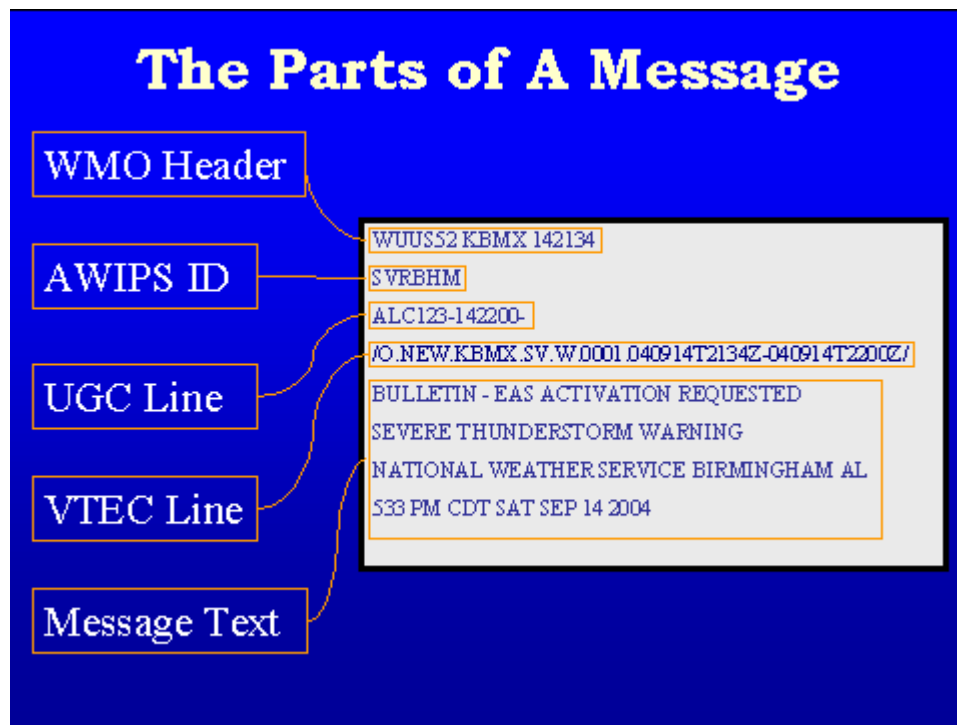
* OTHER LOCATIONS IN THE WARNING INCLUDE BUT ARE NOT LIMITED TO
PITTSVIEW...SEALE...HOLY TRINITY AND FORT MITCHELL.

HEAVY RAINFALL MAY OBSCURE THIS TORNADO. TAKE COVER NOW! IF YOU WAIT
TO SEE OR HEAR IT COMING...IT MAY BE TOO LATE TO GET TO A SAFE PLACE.

TO REPORT SEVERE WEATHER...
CALL 1-800-856-0758.

```

The AWIPS identifier is located on the second line of the message. The different parts of the message are shown in the following graphic.



For most messages, the first 3 characters of the AWIPS identifier is the product type. The last 3 characters are the WFO abbreviation. Now that you have a basic idea and format of a

weather product we can discuss the most common alarms. The following list contains the most common warning / watch product identifiers:

TOR - Tornado Warning
SVR - Severe Thunderstorm Warning
FFW - Flash Flood Warning
WOU - Tornado and Severe Thunderstorm Watch
FFA - Flash Flood Watch
WSW - Winter Storm Watch / Warning
CEM - Civil Emergency

Note: Weather Message uses the special product code WRN to cover TOR, SVR and FFW. This cuts down on the number of alarms that need to be established.

Most weather products / messages can be selected by state and county. These messages have a Universal Geographic Code (UGC) line that contains the county codes associated with the weather products. As you setup your alarms, you will need to decide if you want a message alarmed for your whole state or specific counties.

Alarms for WxMap: Alarms setup for WxMap normally cover an entire state or group of states. In this example, we will setup the watch and warning products for Indiana.

These alarms will be needed:

Product	State	Counties
WRN???	IN	Any County
WOU?	IN	Any County
FFA???	IN	Any County
WSW???	IN	Any County

Note: For this example, we want to also send these watch / warning products to Message Client.

Start Weather Message Setup. You can click on **Start, Programs, Weather Message, Weather Message Server Setup**, or from Weather Message Server click **File** then **Setup**.

You will find the default alarms on the setup screen. You can remove these existing alarms by right clicking on the alarm and selecting delete. When you finish you will have a screen that looks like this.

Weather Message Setup

File Support Setup Help

TCP/IP Port: 9501

Ingest Path: c:\WxMesgNet\WxData\RxFIles

Data Path: C:\WxMesgNet\WxData\WxText

Graphics Path: C:\WxMesgNet\WxData\WxGraph

Alarm File #: 1

Alarm # 1

Product	State	County(s)	Pager Group(s)	Email Group(s)	Fa
??????			None	None	Non

Apply Save Exit

We will start to enter the first alarm by right clicking inside the grid and selecting Add. Enter the first alarm as shown.

New Alarm - WRN???

List Products List Forecast Offices List States

Alarm Client/ Map/ X10 Email Paging/Fax Archive/Html/Exe/Print Notes

Product: WRN??? Tornado, Thunderstorm, Flash Flood Warning, etc All Offices

States: ☒ Indiana ☐ Alaska ☐ Alabama ☐ West Atlantic Ocean ☐ Northwest Atlantic C

Counties: ☐ Adams INC001 ☐ Allen INC003 ☒ Any County INC000 ☐ Bartholomew INC005 ☐ Benton INC007

Set VTEC Set Area Set Wind Set CAP

Match Text: RegEx ☐ Stop Processing ☐

Exclude Text: RegEx ☐ Alarm Active ☒

Save Cancel

You will notice that ??? was used as the WFO identifier. This is done because the state has more than one WFO issuing messages. Weather Message supports the wild card character “?” to match any character in the position that the question mark appears.

After entering the product identifier, state and selecting any county, click on the Client / Map option. Change the To Client and To Map options to Yes. This indicates to the program that you want this product sent to the Message Client and WxMap.

New Alarm - WRN???

List Products List Forecast Offices List States

Alarm Client/ Map/ X10 Email Paging/Fax Archive/Html/Exe/Print Notes

To Client Yes Alarm Type Alarm type is used to play sounds and/or control printing.

To Map Yes

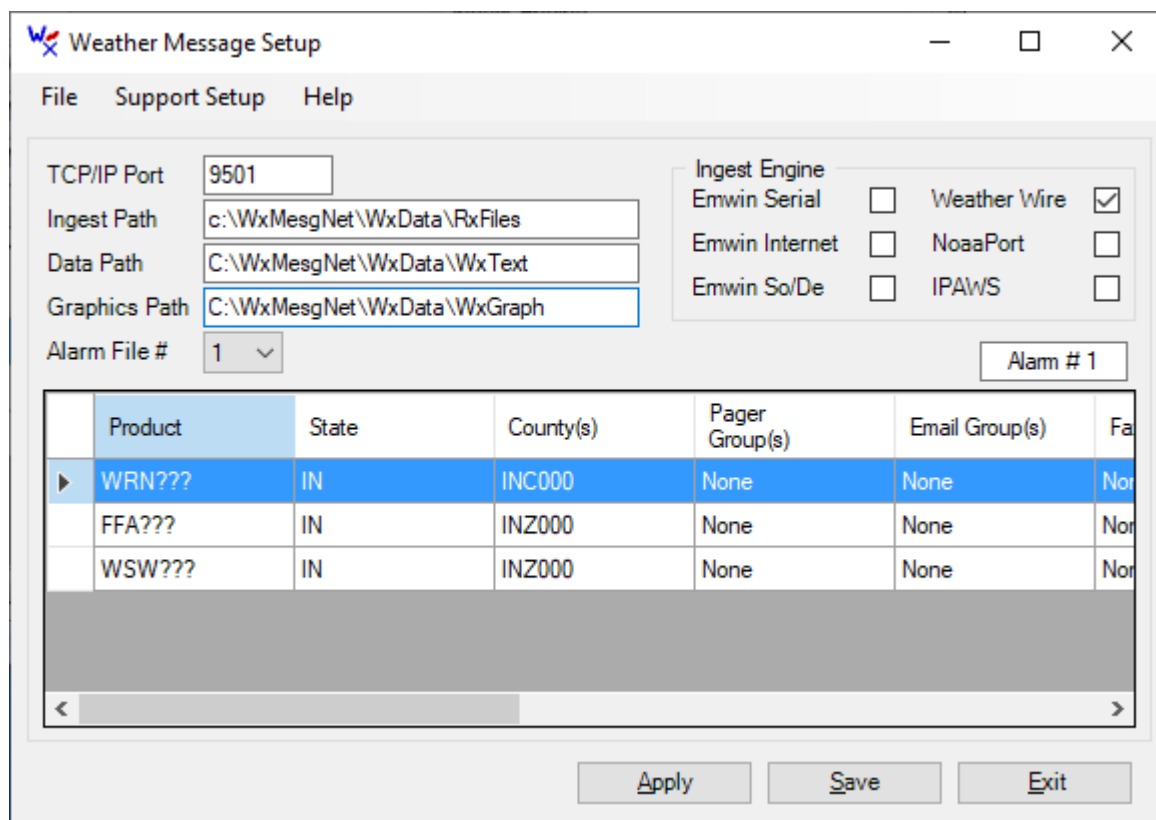
Multicast ☐

X10 Settings

House Code		Unit 1	<input type="checkbox"/>	Unit 5	<input type="checkbox"/>	Unit 9	<input type="checkbox"/>	Unit 13	<input type="checkbox"/>
Command		Unit 2	<input type="checkbox"/>	Unit 6	<input type="checkbox"/>	Unit 10	<input type="checkbox"/>	Unit 14	<input type="checkbox"/>
Duration	0	Unit 3	<input type="checkbox"/>	Unit 7	<input type="checkbox"/>	Unit 11	<input type="checkbox"/>	Unit 15	<input type="checkbox"/>
		Unit 4	<input type="checkbox"/>	Unit 8	<input type="checkbox"/>	Unit 12	<input type="checkbox"/>	Unit 16	<input type="checkbox"/>

Save Cancel

Now click **Save** to save this alarm. Repeat these steps for the remaining alarms. Your setup screen should look like the following.



Weather Message Setup

File Support Setup Help

TCP/IP Port: 9501

Ingest Path: c:\WxMsgNet\WxData\RxFIles

Data Path: C:\WxMsgNet\WxData\WxText

Graphics Path: C:\WxMsgNet\WxData\WxGraph

Alarm File #: 1

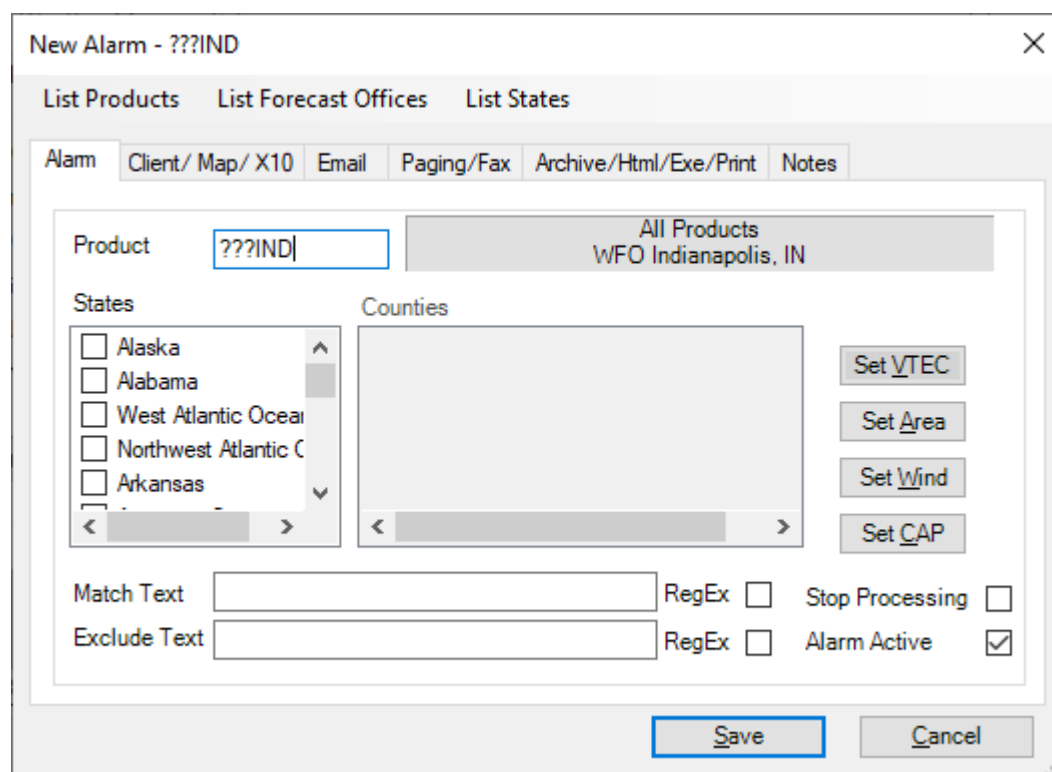
Alarm # 1

Product	State	County(s)	Pager Group(s)	Email Group(s)	Fa
WRN???	IN	INC000	None	None	Non
FFA???	IN	INZ000	None	None	Non
WSW???	IN	INZ000	None	None	Non

Apply Save Exit

This gets the basic warning products setup for all counties in the state. If you only want specific states, you can select them from the list on the alarm setup window.

Each WFO also issues a number of other products. Since IND covers the area we are using for an example, an alarm will be setup to alarm all text products.



New Alarm - ???IND

List Products List Forecast Offices List States

Alarm Client/ Map/ X10 Email Paging/Fax Archive/Html/Exe/Print Notes

Product: ???IND

All Products
WFO Indianapolis, IN

States:

- ☐ Alaska
- ☐ Alabama
- ☐ West Atlantic Ocean
- ☐ Northwest Atlantic C
- ☐ Arkansas

Counties:

Set VTEC
Set Area
Set Wind
Set CAP

Match Text: RegEx ☐ Stop Processing ☐

Exclude Text: RegEx ☐ Alarm Active ☒

Save Cancel

You will notice that no state or county was selected in this case. This will insure that you receive all products issued by the IND WFO. This alarm is only going to get sent to the Message Client, so the To Client option is set to Yes.

New Alarm - ???IND

List Products List Forecast Offices List States

Alarm Client/ Map/ X10 Email Paging/Fax Archive/Html/Exe/Print Notes

To Client Yes Alarm Type Alarm type is used to play sounds and/or control printing.

To Map No

Multicast ☐

X10 Settings

House Code Unit 1 Unit 5 Unit 9 Unit 13

Command Unit 2 Unit 6 Unit 10 Unit 14

Duration 0 Unit 3 Unit 7 Unit 11 Unit 15

Unit 4 Unit 8 Unit 12 Unit 16

Save Cancel

The EMWIN data stream contains a number of graphical products. This alarm is setup to receive those graphics.

New Alarm - GRAPHI

List Products List Forecast Offices List States

Alarm Client/ Map/ X10 Email Paging/Fax Archive/Html/Exe/Print Notes

Product GRAPHI Graphics File All Offices

States

Counties

Set VTEC

Set Area

Set Wind

Set CAP

Match Text Regex Stop Processing

Exclude Text Regex Alarm Active

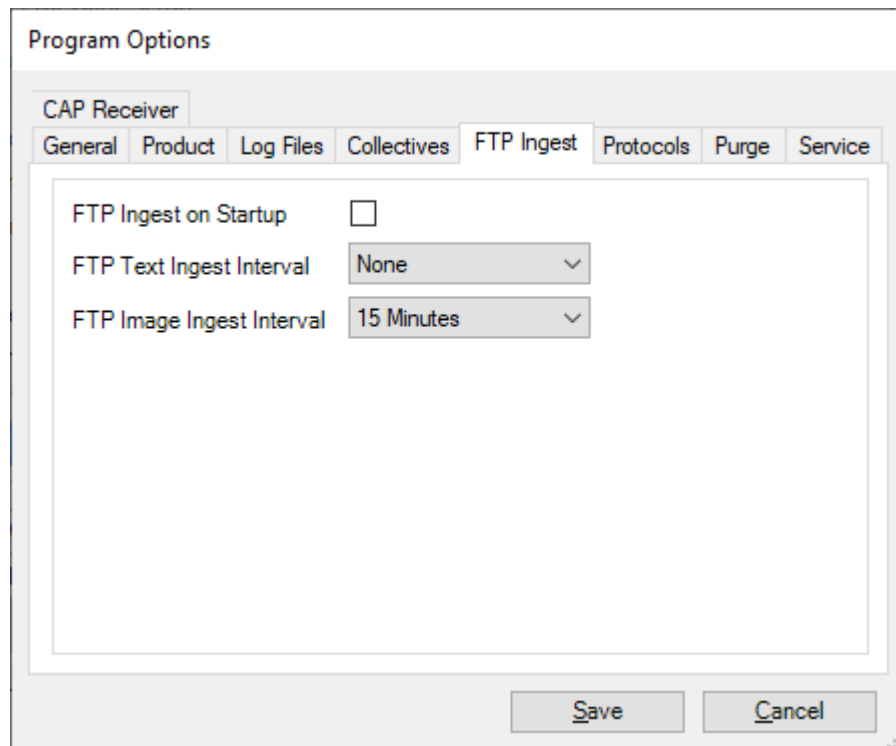
Save Cancel

Weather Message using the AWIPS identifier “GRAPHI” to identify and alarm all graphic products. You do not select a state for graphics. Set the To Client option to “Yes”.

Receiving all products: If you want to receive all of the products on EMWIN, you can setup an alarm with the Product Identifier “??????” and set the To Client option to “Yes”. This will send every received product to the Message Client. This option is sometimes useful to learn about the different weather products.

Note: EMWIN graphic files are not sent over the Weather Wire stream. To receive graphics, you must enable an option in Weather Message.

Open Weather Message Server Setup. Click the Support Setup menu option. Then Select Options. Click the FTP Ingest tab.



Change the FTP Image Ingest Interval to 15 minutes.

Note: If you want to process the EMWIN text files while you are waiting on your user name and password, you can enable the FTP Text Ingest Interval.

For additional information about alarm setup and the many other options available with Weather Message, please click Help and Weather Message Help in this setup program.